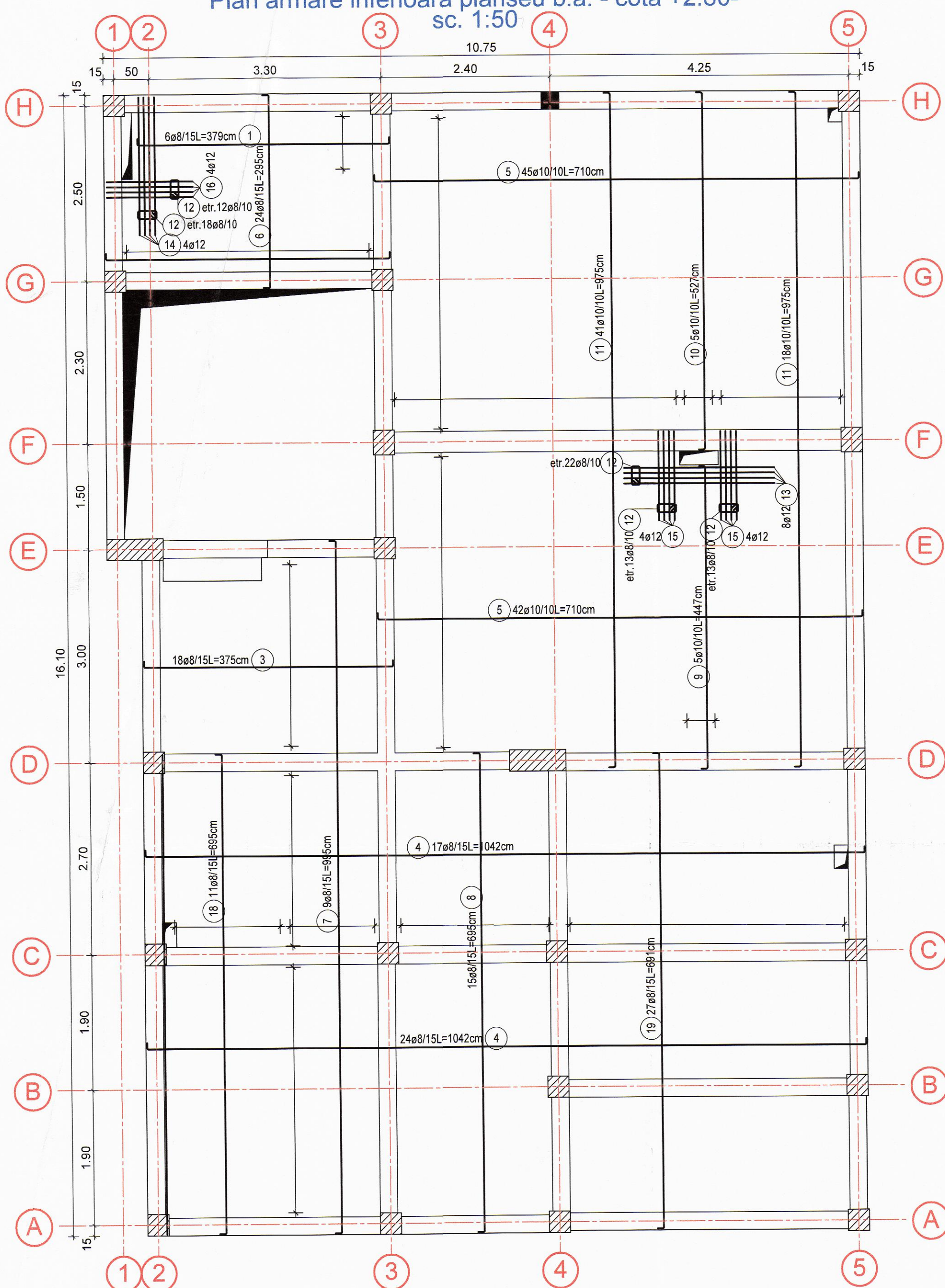
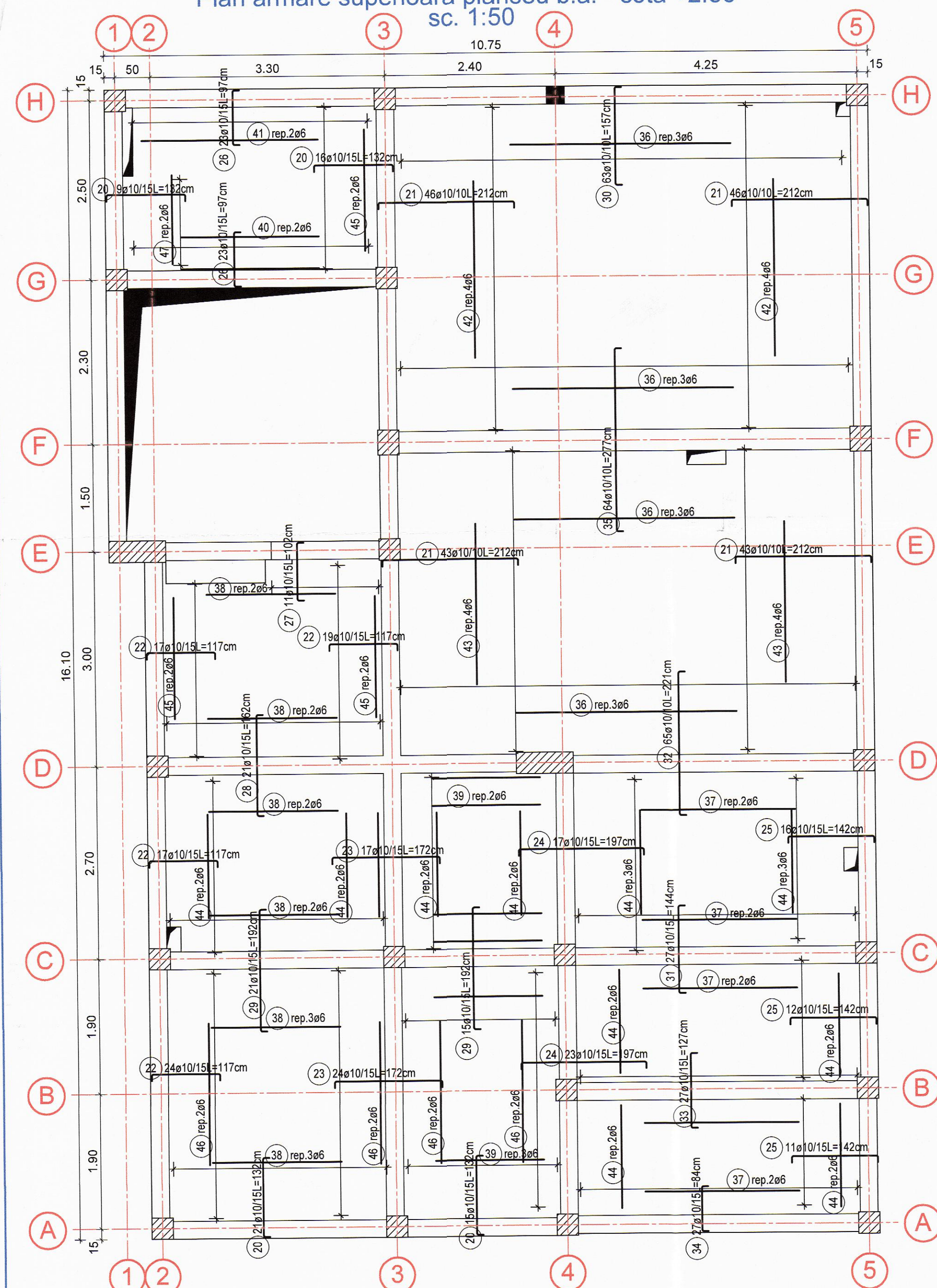


Plan armare inferioara planseu b.a. - cota +2.80-  
sc. 1:50



Plan armare superioara planseu b.a. - cota +2.80-  
sc. 1:50



**Materiale:**  
Beton: conform SR EN 206-1  
Beton armat :  
Beton clasa C20/25 - XC1; D11/20; A/C = 0,50, S3, Cl.O.1%, Dmax16  
-stalpi, samburi, centuri, grinzi, scara, plansee b.a.-  
OTEL  
BST500S, clasa de ductilitate

se vor citi impreuna plansele R08,R09, R10, R11, R12

Extras armare planseu b.a.- cota +2.80

Poz.	Buc.	Ø	Lungime unitara [m]	Forma fasonata (fara scara)	Lungime totala [m]	Greutate [kg]
1	6	8	3.79		22.74	8.98
2	9	8	4.25		38.25	15.11
3	18	8	3.75		67.50	26.66
4	41	8	10.42		427.22	168.75
5	87	10	7.10		617.70	380.50
6	24	8	2.95		70.80	27.97
7	9	8	9.95		89.55	35.37
8	15	8	6.95		104.25	41.18
9	5	10	4.47		22.35	13.77
10	5	10	5.27		26.35	16.23
11	59	10	9.75		575.25	354.35
12	78	8	1.00		78.00	30.81
13	8	12	2.15		17.20	15.27
14	8	12	1.97		15.76	13.99
15	16	12	1.27		20.32	18.04
16	8	12	1.23		9.84	8.74
17	120	12	1.50		180.00	159.84
18	12	8	6.95		83.40	32.94
19	27	8	6.91		186.57	73.70
20	61	10	1.32		80.52	49.60
21	178	10	2.12		377.36	232.45
22	77	10	1.17		90.09	55.50
23	41	10	1.72		70.52	43.44
24	40	10	1.97		78.80	48.54
25	39	10	1.42		55.38	34.11
26	46	10	0.97		44.62	27.49
27	11	10	1.02		11.22	6.91
28	21	10	1.62		34.02	20.96
29	36	10	1.92		69.12	42.58
30	63	10	1.57		98.91	60.93
31	27	10	1.44		38.88	23.95
32	65	10	2.21		143.65	88.49
33	27	10	1.27		34.29	21.12
34	27	10	0.84		22.68	13.97
35	64	10	2.77		177.28	109.20
36	12	6	3.11		37.32	8.29
37	10	6	2.18		21.80	4.84
38	14	6	1.82		25.48	5.66
39	10	6	1.53		15.30	3.40
40	2	6	1.94		3.88	0.86
41	2	6	2.49		4.98	1.11
42	8	6	2.48		19.84	4.40
43	8	6	2.26		18.08	4.01
44	22	6	1.46		32.12	7.13
45	6	6	1.70		10.20	2.26
46	8	6	2.01		16.08	3.57
47	2	6	1.25		2.50	0.56

Greutate totala [kg] : 2367.53 kg

		Lungime totala [m]			
		6	8	10	12
Total	m (m²)	207.58	1168.28	2668.99	243.12
	kg/m (kg/m²)	0.222	0.395	0.616	0.888
	kg	46.08	461.47	1644.40	215.89
	kg			2367.54	

**NOTA:**  
Turnarea planseului din b.a se realizeaza concomitent  
cu turnarea centurilor, grinziilor si rampelor scarii etajului curent

Categoria de importanta a constructiei, conform HGR 766/1997:C  
Clasa de importanta conform P100-1/2013-III.  
ag = 0.25g, Tc = 0.7 s,  
Clasa de expunere a constructiei : mediu uscat moderat.

PROIECTARE, CONSULTANTA, ASISTENTA TEHNICA IN DOMENIILE CONSTRUCTII CIVILE, INDUSTRIALE SI AGRICOLE

JOS/906.2006  
TEL. / FAX 0248 251073, 0744804995  
TEL. 0248 282131, 0766125222, 0766682644

**S.C. MODVEST CONSTRUCT 2000 S.R.L.**  
PITESTI

MANAGER PROIECT Ing. GHEORGHE JUNE  
SEF PROIECT arh. Cristian Musat  
PROIECTAT Ing. Rania Cristinel Nicolae  
DESENAT Ing. Rania Cristinel Nicolae

ISO 9001 ISO 14001 OHSAS 18001

COMPLEX DE 4 LOCUINTE PROTEJATE SI CENTRU DE ZI, COMUNA TIGVENI, SATUL BARSISTII DE JOS, JUDETUL ARGES - cod SINS 12069

BENEFICIAR: DIRECTIA GENERALA DE ASISTENTA SOCIALA SI PROTECTIA COPILULUI ARGES  
ADRESA: mun. Pitesti, Calea Drageanu nr.8, Jud. Arges  
ADRESA MOBILA: COMUNA TIGVENI, SATUL BARSISTII DE JOS, JUDETUL ARGES

SCALA: 1:50  
nr. contract: 31905 / 08.10.2019  
data: dec. 2019

PLANSA R 30 FAZA P.TH.-D.E

-cota +2.80  
plan armare planseu b.a.  
extras armare planseu b.a.